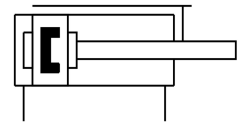
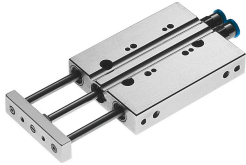


Mini guided actuator DFC-6-30-P-A-GF

Part number: 189460

FESTO



Data sheet

Feature	Value
Distance of centre of gravity of payload to yoke plate xs	10 mm
Stroke	30 mm
Piston diameter	6 mm
Drive unit operating mode	Yoke
Cushioning	Elastic cushioning rings/pads at both ends
Mounting position	Any
Guide	Sliding guide
Structural design	Guide
Position sensing	For proximity sensor
Operating pressure	0.15 MPa...1 MPa 1.5 bar...10 bar
Max. speed	1 m/s
Mode of operation	Double-acting
Operating medium	Compressed air as per ISO 8573-1:2010 [7:4:4]
Information on operating and pilot media	Operation with oil lubrication possible (required for further use)
Corrosion resistance class (CRC)	2 - Moderate corrosion stress
LABS (PWIS) conformity	VDMA24364-B2-L
Ambient temperature	-5 °C...60 °C
Impact energy in the end positions	0,008 Nm
Max. torque Mx	0.1 Nm
Max. payload as a function of the stroke at defined distance xs	4.8 N
Theoretical force at 6 bar, retracting	12.5 N
Theoretical force at 6 bar, advancing	17 N
Moving mass	8.8 g
Moving mass at 0 mm stroke	8.8 g
Additional moving mass per 10 mm stroke	2.8 g
Product weight	55 g
Pneumatic connection	M3
Cover material	Wrought aluminum alloy
Seals material	NBR
Housing material	Wrought aluminum alloy
Piston rod material	High-alloy stainless steel

